

Guided Harness Assembly and Testing

from 256 to 32,000 points

It's a tester

The *easy-wire*TM CR is a compact, versatile harness and backplane tester. It tests wired assemblies for opens, shorts, and mis-wires with user-selectable pass-fail resistance thresholds from 0.1Ω to 500kΩ. It tests resistors, diodes, and capacitors. 4-wire mode allows you to null out interface fixture resistance and test as low as .010Ω.

Compact & Expandable: The CR's extremely small size (each 256-point box measures only 5.4" x 6.6" x 2.6" and weighs only 2.9 lbs.) and daisy-chain architecture allow you to distribute the test points around your device under test reducing the length and complexity of your interface cabling. Expandable to 32,000 points, the CR should meet your largest requirements.



Call Toll-free 1-800-441-9910
www.cirris.com

It's a guided harness-assembly aid

On-screen graphical representation of connectors, along with blinking LEDs on the harness board, make the CR ideal for helping operators to speed the task of building harnesses. Even experienced assemblers will appreciate the immediate audible feedback provided, catching wiring errors the instant they occur.

Fast and Easy: Harness set-up information is a snap with the CR's Windows[®] 95/98/NT-based software program. With the help of graphical prompts you easily define connectors, input from/to wiring information, create circuit labels, and setup LEDs.

Versatile: With sequential build/test mode, random build/test mode, single test, and continuous test the CR can be set up to handle a wide variety of harness build and test needs. The probe/wrist strap feature using body conductance further simplifies harness assembly.

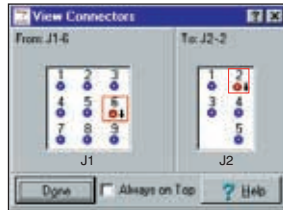
CIRRIS[®]

Cable/Harness Testing Made EasyTM

Finally a guided harness assembly/test system that is easy to set up and use!

The *easy-wire*TM CR is a guided harness assembly system that will help you to quickly and efficiently build high-quality wire harnesses.

Graphical Connectors: Simply define a connector type and the number of pins. A graphical representation of the connector is generated instantly. You define the connector name and pin numbers.



Graphical connector representation.

LED Guided Assembly: LEDs are driven by regular test points (2 points per LED); no special electronics are required. One LED is required for each connector when using *easy-wire*TM adapters.



Blinking LEDs indicate wire routing.

Random Back-Wiring: After back-wiring your harness board you simply probe each point at the mating connectors when instructed. The tester then knows how each of its default points map to each of your connector pins.

OR... *easy-wire*TM Adapters: *easy-wire*TM adapters eliminate the need for traditional back-wiring. You simply plug *easy-wire*TM adapters into the adapter transition board which is wired back to the tester through ribbon cables. After initial setup the software guides the operator where to plug in the *easy-wire*TM adapters.

Audible and Visual Results: When using the *easy-wire*TM CR for guided harness assembly an audible tone sounds each time a connection is made: one tone for a good connection and a different tone for a bad connection. In addition, green blinking LEDs indicate the next two points to be terminated, while red blinking LEDs indicate a mis-wired connection.



User-defined pin names/wire definitions.

Specifications

TEST POINTS

Expandable from 256 to 32,000 points in 256-point increments.

UNIT TYPES

Base Scanner: 256 points, one required per test system
 Add-on Scanner: 256 points, no power required
 Booster Scanner: 256 points, one required after each 7 add-on scanners

TEST LEVELS (up to 4,096 points; over 4,096 points, consult factory)

Voltage: 10 volts at < 6mA
 Resistance: 0.1Ω to 100kΩ ±3% ±0.1Ω, 100kΩ to 1MΩ ±5%
 Capacitance: 100pF to 1000μF ±10%
 Components Tested: resistors, diodes, LEDs, capacitors
 Distributed Testing: max distance between boxes, 20 feet; max distance total system, 200 feet
 Test Rate: 256 points < 1 second
 Mating Connectors: 64 point (2 row x 32 pins) 0.1" box header with latches

COMPUTER REQUIREMENTS

Minimum: 266MHz Pentium II, Windows 98 Ver 2 (will NOT run on 95), 1GB hard drive space, 128 Meg RAM, CD-ROM, color VGA, sound card, free serial port
 Recommended: 600MHz Pentium III, Win XP, 2000, 2GB hard drive space, 256 Meg RAM, 1024 x 768 SVGA
 Network Database Server: Min. 500MHz Pentium III (recommended 1000MHz), Min. 256M RAM (recommended 512), Min. 4GB hard drive space (recommended 10GB), Windows XP Pro, Windows 2000 SR1 or higher

POWER (required for base unit and boosters only)

105-130 VAC, 60Hz 16 watts max
 210-260 VAC, 50Hz (optional)

PROBE/WRIST STRAP

For wire/pin identification during guided assembly, testing, and editing

SIZE

5.4" x 6.6" x 2.6" (13.7 x 16.8 x 6.6 cm)

WEIGHT (per box)

2.9 lbs (1.3 kg)

SOFTWARE FEATURES

Learn from sample
 Regular test points drive LEDs
 Build mode for testing during harness assembly
 LED, sound, and graphical feedback during test, assembly, and edit
 Password security
 SPC data collection

WARRANTY

One year parts and labor. Replacement modules available next working day.

For More Information Call Toll-free 1-800-441-9910

CIRRIS[®]

Cable/Harness Testing Made Easy[™]